

Every fortnight, **HEADlines** brings you the latest news, stories and commentaries in **education and healthcare**.



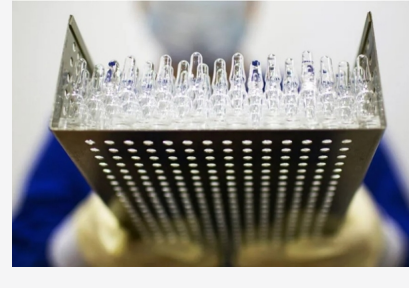
Lecanemab - A silver lining for patients with Alzheimer's

Alzheimer's disease, which [accounts for 60-70% of dementia cases](#) worldwide, may soon be treatable. The newest experimental drug, lecanemab, developed by pharmaceutical companies Eisai and Biogen, was found to [slow down cognitive decline by 27%](#) in a 18-months large scale clinical trial.

About 1800 patients aged 50-90 years old with early stage Alzheimer's Disease participated in the trial. [Singapore's National University Hospital \(NUH\) is one of the participating sites](#) of the trial, and is the only one in South-east Asia. Caregivers interviewed were grateful that their loved ones were more jovial and social after receiving the lecanemab treatment.

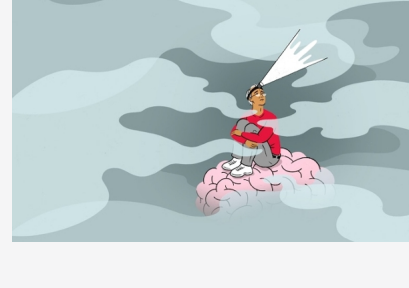
These results have [reignited hope](#) in the scientific community. There have been many false hopes and [controversies](#) in the two decade long research of finding a treatment for a disease with no known cure. [Lecanemab may be the real deal](#), marking what could be ['the beginning of the end'](#) for the disease.

In the Spotlight



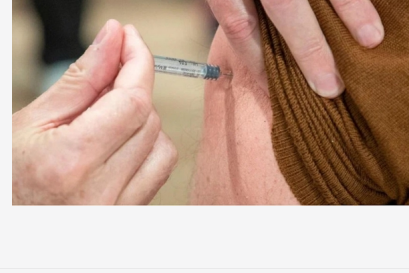
[Dementia vaccines: What are they, and when could they become available? | Medical News Today](#)

Experts weigh in on how a dementia vaccine would work and how quickly we may see one becoming available to the public.



[What it's like to live with brain fog | The Washington Post](#)

The condition, a form of cognitive dysfunction, affects people with long COVID, cancer and other chronic conditions



[Researchers test mRNA technology for universal flu vaccine | The Straits Times](#)

Unlike standard flu vaccines that protects against the prevailing flu virus, the experimental vaccine offers broad protection against 20 influenza virus subtypes.

[Climate action must include nutrition | Foodtank](#)

The climate crisis exacerbates hunger and malnutrition by threatening the nutritional quality of crops as well as crop productivity, which impacts food prices and calorie intake.



[Where does Traditional Chinese medicine fit into Singapore's healthcare reform plan? | Channel News Asia](#)

Innovation and a change in mindset are needed if traditional Chinese medicine is to be accepted as mainstream medicine, says this industry practitioner.



[Why We Need to Have More Critical Conversations About Social and Emotional Learning | EdSurge](#)

Academic scholars discuss how it can be possible to be deeply committed to fostering students' and teachers' social and emotional humanity and to question particular elements of Social and Emotional Learning itself.



[India reaches out to top Singapore, global universities for collaboration | The Straits Times](#)

Three Singapore universities, including the National University of Singapore, feature in a list of around 260 top international academic institutions that India has approached to initiate close academic linkages with local universities.

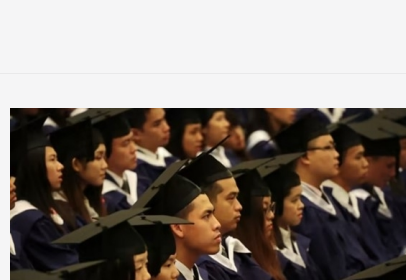
[How can a holistic education policy help bridge the opportunity gap for girls in rural Pakistan? | Brookings](#)

In order to increase opportunities for inclusion and belonging in rural Pakistan, especially for girls, education policy must respond holistically, from a systemic and contextual lens.

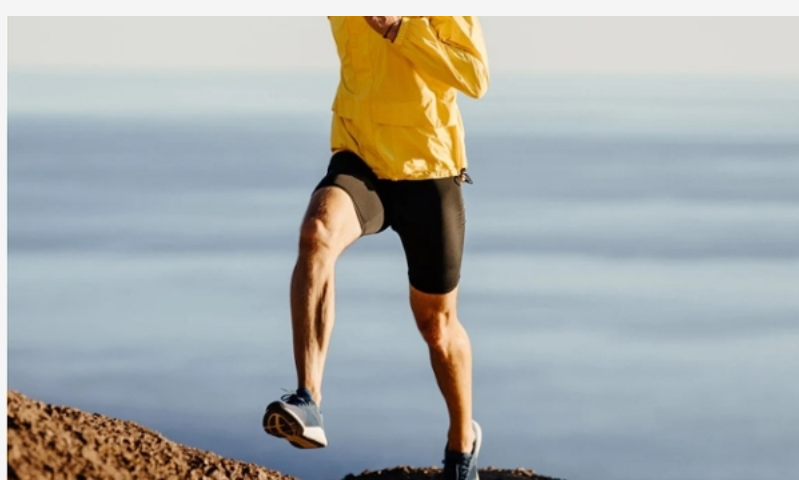


[Commentary: If grades matter less in Singapore, young job seekers may struggle to stand out | CNA](#)

While a broader definition of merit is what Singapore should aspire to, it could merely translate into more pressure for students to stand out in a competitive job market if not managed well.



Healthbytes



[Does running really wreck your knees?](#)

Source: *The Washington Post*

Contrary to popular opinion, distance running rarely causes knee problems in runners, and often leaves joints sturdier and less damaged. Time to lace up those running shoes!

That's all for the week!

Copyright © The HEAD Foundation

Note: Credit to the rightful owners for photos and content used. Clicking the photos and embedded links will direct you to their source.

You're receiving this email because you have previously signed up for this newsletter and/or participated

in The HEAD Foundation's events.



<https://headfoundation.org/>



Powered by Glue Up

All-in-one CRM Software for Growing Communities