

Every fortnight, **HEADlines** brings you the latest news, stories and commentaries in **education and healthcare**.



## Toward a student-centred approach in pedagogy and assessment

Student-centred instructional approaches advocate involving students in decisions regarding their learning and eschewing a one-size-fits-all mentality to pedagogy and assessment. Such approaches shift the focus from having external and highly impersonal benchmarks to one that actively considers the individual student.

In Singapore, moves to embrace this approach have gone beyond the classroom to involve national exams and co-curricular activities. [The Ministry of Education recently reported an uptick in the number of applications for direct admissions to secondary school](#). This indicates an increasing willingness of schools to consider alternative avenues of assessment that look at students' aptitudes in areas outside of traditional testing. In addition, [a programme that brings together students from different schools to pursue shared interests in sports and arts is looking to expand its scope](#) to further encourage students' development and competencies beyond academics.

Endeavours to implement such pedagogy is not without its challenges. For one, teachers' workloads will increase in tandem with the demand for personalised lessons. However, if the aim is to equip the students of today to be future-ready, a cookie-cutter approach to pedagogy will do them great disservice. Student-centred instruction is a demanding challenge, but one worth taking on.

## In the Spotlight



### [South Korea's education success is faltering in evolving economy: Report | The Straits Times](#)

Despite having the highest numbers of college graduates in the developed world, South Korea is now facing increased criticism ranging from failing to meet the demands of a modern labour market to contributing to worsening mental health among the young.



### [SkillsFuture courses to be refreshed to focus on digital, green and care sectors | CNA](#)

From Jan 1, 2023, Singaporeans can undergo specialised training to acquire skills in the digital, green and care industries, through a refreshed series of SkillsFuture courses. These skills are in high demand today and transferable across different jobs and industries.

### [Want resilient and well-adjusted kids? Let them play | The Hechinger Report](#)

Research suggests that play has a positive impact on children's socio-emotional and academic performance throughout their formative years. Play should not be seen as tangential to learning, experts say, but should be viewed instead as the natural way young children learn.



### [How a Preschool on Wheels Is Driving Opportunity to Latino Immigrant Families in Colorado | EdSurge](#)

El Busesito Preschool is a mobile classroom with the goal to expose children from Latino immigrant families to a formal education setting.



### [Could a different method of teaching address low education scores? | ABC News](#)

In light of recent news about poor academic scores and the ongoing debate about how to teach children about race and gender, researchers argue that culturally responsive education could be the key to re-engaging with students.

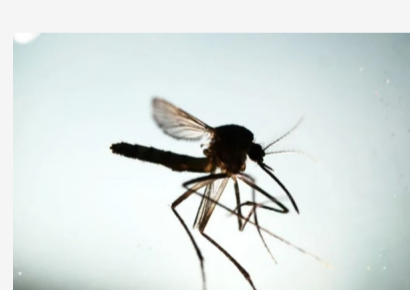
### [Having a sense of purpose may help you live longer, research shows | Medical News Today](#)

A sense of purpose can drive healthy behaviour and lower the risk of all causes of mortality, regardless of gender, race, or ethnicity.



### [Real-world data show updated COVID-19 boosters increase protection against infection | STAT](#)

The protection was even stronger when people waited a longer period of time since their last dose of the original shot.



### [Kill the dengue virus in 6 hours instead of 2 weeks? This NUS researcher is 'getting close' | CNA](#)

After spending 10 years on dengue research, the team from the Immunology Translational Research Programme are hopeful that clinical trials of 'super potent' medicines can start in the next 18 to 24 months.

### [What climate change is already doing to children's brains | TIME](#)

A child's developing brain is especially prone to disruption by toxic air pollutants and climate-related stressors, which can result in reduced IQ, cognitive, emotional and development disorders and even structural changes to the brain.



*That's all for the week!*

Copyright © The HEAD Foundation

Note: Credit to the rightful owners for photos and content used. Clicking the photos and embedded links will direct you to their source.

You're receiving this email because you have previously signed up for this newsletter and/or participated in The HEAD Foundation's events.



<https://headfoundation.org/>



Powered by Glue Up

All-in-one CRM Software for Growing Communities